



## The Millbrook Power (Gas Fired Power Station) Order

### Additional Submission on The Current Status of Low Level Restoration Scheme Baseline Works for Millbrook Power – Submitted at Deadline 2

Planning Act 2008  
The Infrastructure Planning  
(Applications: Prescribed Forms and Procedure) Regulations 2009

PINS Reference Number:	EN010068
Document Reference:	N/A
Regulation Number:	N/A
Author:	Pinsent Masons LLP

Revision	Date	Description
0	April 2018	Examination Version







## Millbrook Power

### Schedule of LLRS works assumed for future baseline and progress to date on LLRS construction

In accordance with Requirement 31 of the Covanta RRF Project, and as confirmed by Central Bedfordshire Council at the DCO Issue Specific Hearing on 13 March 2018, Phase 1 of the LLRS has now been completed. These works are depicted in the attached *Figure 3.2\_Phase 1 Platform\_14081\_015\_01C*, which is an approved plan under condition 2 of the LLRS planning permission (ref BC/CM/2000/8) and are described below (which has been taken from the environmental statement to the Covanta RRF Project):

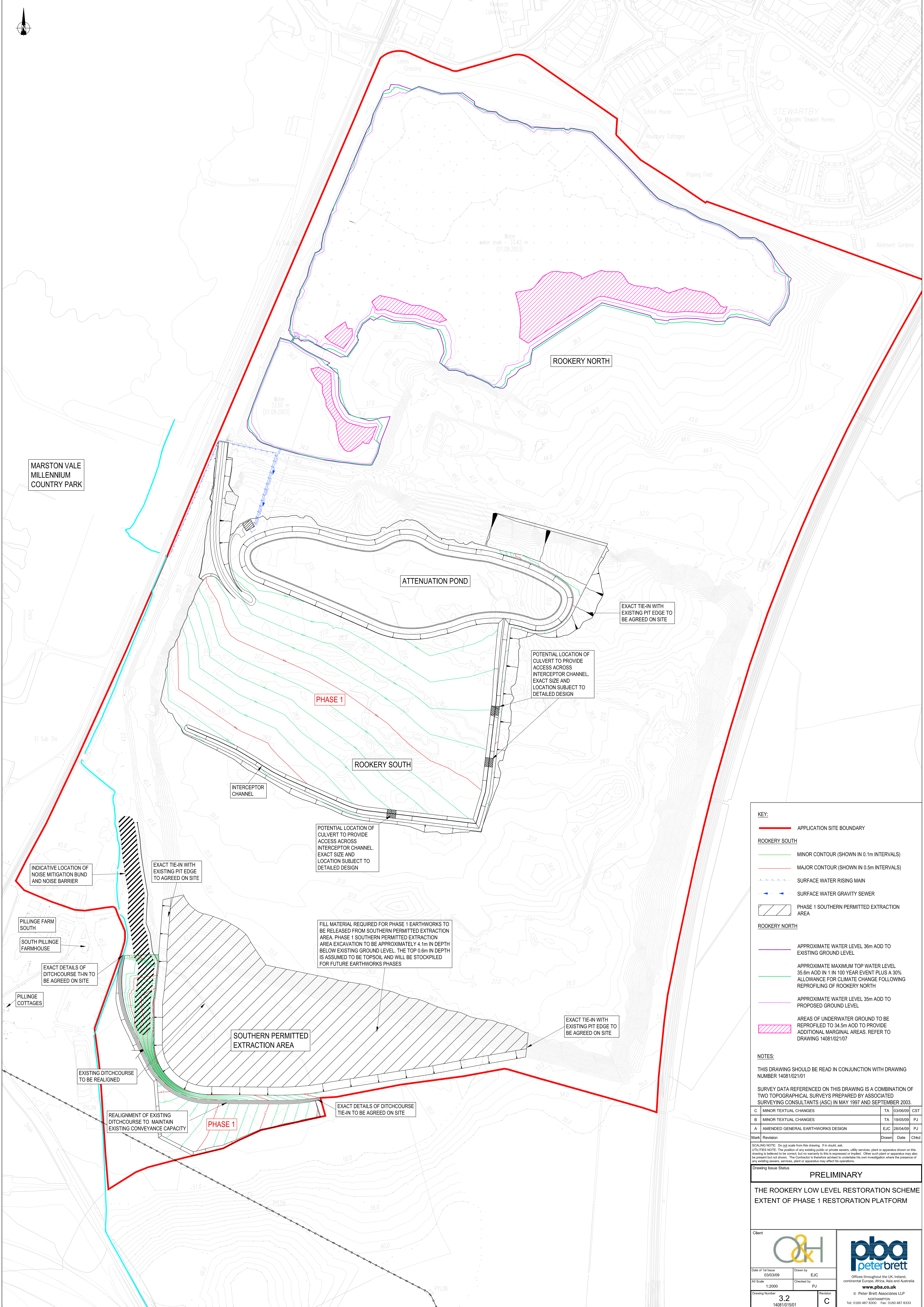
- dewatering of accumulated surface waters within the western half of Rookery South Pit by pumping from the base of Rookery South Pit into the marginal ditch to the west of the pit, sufficient to facilitate subsequent earthworks;
- trapping and relocation of Great Crested Newts from the western half of Rookery South Pit to receptor sites created by localised enhancements to Rookery North Pit;
- redirection of existing surface water ditches and provision of an upper carrier ditch around the southern perimeter of the southern permitted excavation area;
- topsoil stripping and stockpiling of material from the remaining southern permitted extraction area on the southern side of Rookery South Pit to enable the extraction of clay from the southern permitted extraction area for use in the proposed restoration scheme;
- construction of a temporary noise barrier and grassed earth bund to attenuate noise from the restoration works to Pillinge Farm South and Pillinge Cottages;
- construction of a new vehicular access track at the north western corner of the pit to provide low level access to the pit, with associated regrading of slopes as necessary;
- excavation of clay soils from the southern permitted extraction area to provide material for the proposed restoration works;
- re-profiling, of the base of Rookery South Pit, graded to falls, utilising clay won from the southern area, resulting in topographic levels in the vicinity of the proposed Operations Area of approximately 30 m AOD – 31 m AOD. Any geotechnically unsuitable materials will be removed and stockpiled within the Phase 2 area for subsequent treatment e.g. drying, and subsequent reuse;
- creation of surface water drainage ditches and attenuation pond. The surface water ditches and attenuation pond will include ecological habitat mitigation and enhancement measures; and
- provision of a pumping station to enable external discharge of collected waters from the attenuation pond to an existing ditch/culvert discharge to Stewartby Lake.

In addition to the above, a network of permissive footpaths in Rookery North Pit and around the attenuation pond have been built or are under construction.

In respect of MPL's EIA baseline for the environmental assessment, the assessment assumed that parts of the LLRS had been completed which are set out below and depicted in the plan *The Rookery Low Level Restoration Scheme – Baseline Works for Millbrook Power* drawing number J0008128-409 :

- those parts of Phase 1 necessary for the MPL Project (and which are now complete), being:

- trapping and relocation of great crested newts from the western half of the pit
- the re-profiling of the north west part of the base of the pit involving the extraction of soils and clays from the permitted extraction area on the southern side with re-grading of the base of the pit to an approximate level of 15 mbgl;
- implementation of surface water drainage measures in the north west part of the pit and construction of an attenuation pond and pumping station;
- provision of buttressing to the northern slopes;
- provision of an access ramp into Rookery South Pit from Rookery North Pit;
- the re-profiling of the base of the pit at the Power Generation Plant Site;
- implementation of surface water drainage measures at the Power Generation Site and permitted extraction area to the south including constructing surface water drainage channels;
- buttressing to the slopes to the south and west of the Power Generation Site;
- provision of a smaller access track into and out of Rookery South Pit from the south side of the pit connecting with Station Lane, near Millbrook Station



MARSTON VALE MILLENNIUM COUNTRY PARK

ROOKERY NORTH

ATTENUATION POND

PHASE 1

ROOKERY SOUTH

INTERCEPTOR CHANNEL

POTENTIAL LOCATION OF CULVERT TO PROVIDE ACCESS ACROSS INTERCEPTOR CHANNEL. EXACT SIZE AND LOCATION SUBJECT TO DETAILED DESIGN

EXACT TIE-IN WITH EXISTING PIT EDGE TO BE AGREED ON SITE

POTENTIAL LOCATION OF CULVERT TO PROVIDE ACCESS ACROSS INTERCEPTOR CHANNEL. EXACT SIZE AND LOCATION SUBJECT TO DETAILED DESIGN

INDICATIVE LOCATION OF NOISE MITIGATION BUND AND NOISE BARRIER

EXACT TIE-IN WITH EXISTING PIT EDGE TO BE AGREED ON SITE

FILL MATERIAL REQUIRED FOR PHASE 1 EARTHWORKS TO BE RELEASED FROM SOUTHERN PERMITTED EXTRACTION AREA. PHASE 1 SOUTHERN PERMITTED EXTRACTION AREA EXCAVATION TO BE APPROXIMATELY 4.1m IN DEPTH BELOW EXISTING GROUND LEVEL. THE TOP 0.6m IN DEPTH IS ASSUMED TO BE TOPSOIL AND WILL BE STOCKPILED FOR FUTURE EARTHWORKS PHASES

SOUTHERN PERMITTED EXTRACTION AREA

EXACT TIE-IN WITH EXISTING PIT EDGE TO BE AGREED ON SITE

PILLING FARM SOUTH

SOUTH PILLING FARMHOUSE

EXACT DETAILS OF DITCHOURSE TIE-IN TO BE AGREED ON SITE

PILLING COTTAGES

EXISTING DITCHOURSE TO BE REALIGNED

REALIGNMENT OF EXISTING DITCHOURSE TO MAINTAIN EXISTING CONVEYANCE CAPACITY

EXACT DETAILS OF DITCHOURSE TIE-IN TO BE AGREED ON SITE

PHASE 1

**KEY:**

- APPLICATION SITE BOUNDARY
- ROOKERY SOUTH
  - MINOR CONTOUR (SHOWN IN 0.1m INTERVALS)
  - MAJOR CONTOUR (SHOWN IN 0.5m INTERVALS)
  - SURFACE WATER RISING MAIN
  - SURFACE WATER GRAVITY SEWER
  - PHASE 1 SOUTHERN PERMITTED EXTRACTION AREA
- ROOKERY NORTH
  - APPROXIMATE WATER LEVEL 36m AOD TO EXISTING GROUND LEVEL
  - APPROXIMATE MAXIMUM TOP WATER LEVEL 35.6m AOD IN 1 IN 100 YEAR EVENT PLUS A 30% ALLOWANCE FOR CLIMATE CHANGE FOLLOWING REPROFILING OF ROOKERY NORTH
  - APPROXIMATE WATER LEVEL 35m AOD TO PROPOSED GROUND LEVEL
  - AREAS OF UNDERWATER GROUND TO BE REPROFILED TO 34.5m AOD TO PROVIDE ADDITIONAL MARGINAL AREAS. REFER TO DRAWING 14081/021/07

**NOTES:**

THIS DRAWING SHOULD BE READ IN CONJUNCTION WITH DRAWING NUMBER 14081/021/01

SURVEY DATA REFERENCED ON THIS DRAWING IS A COMBINATION OF TWO TOPOGRAPHICAL SURVEYS PREPARED BY ASSOCIATED SURVEYING CONSULTANTS (ASC) IN MAY 1997 AND SEPTEMBER 2003.

C	MINOR TEXTUAL CHANGES	TA	03/06/09	CST
B	MINOR TEXTUAL CHANGES	TA	19/05/09	PJ
A	AMENDED GENERAL EARTHWORKS DESIGN	EJC	28/04/09	PJ

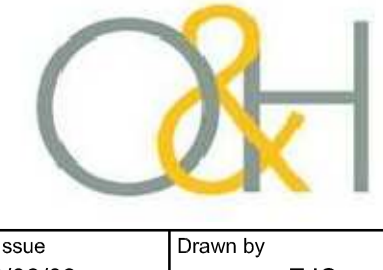

Mark: Revision      Drawn:      Date:      Chkd:

SCALING NOTE: Do not scale from this drawing. If in doubt, ask.

UTILITIES NOTE: The position of any existing public or private sewers, utility services, plant or apparatus shown on this drawing is believed to be correct, but no warranty is given or implied. Other such plant or apparatus may also be present but not shown. The Contractor is therefore advised to undertake his own investigation where the presence of any existing services, services, plant or apparatus may affect his operations.

Drawing Issue Status: **PRELIMINARY**

THE ROOKERY LOW LEVEL RESTORATION SCHEME  
EXTENT OF PHASE 1 RESTORATION PLATFORM

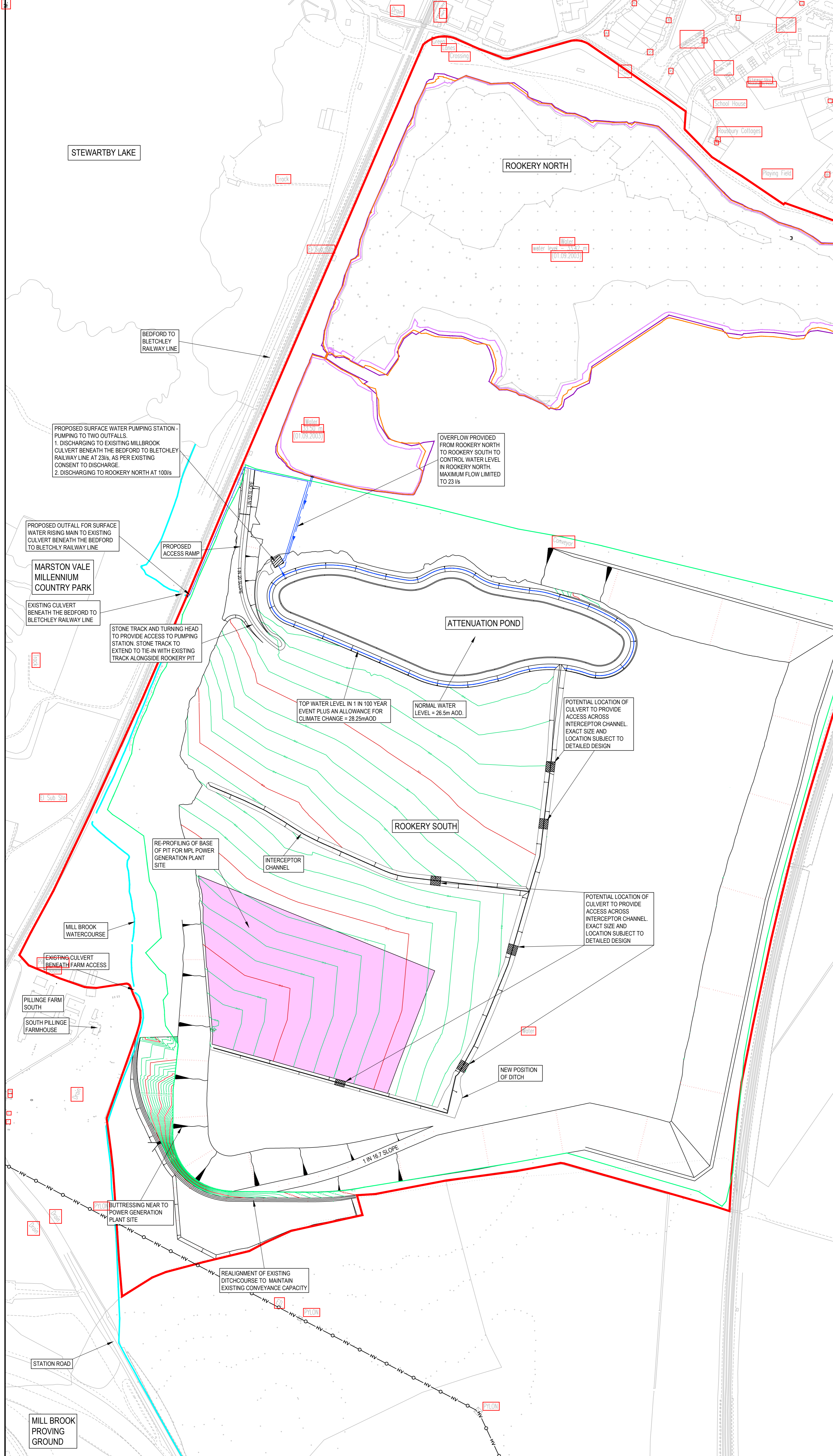
Client:  

Date of 1st Issue: 03/03/09      Drawn by: EJC

AD Scale: 1:2000      Checked by: PJ

Drawing Number: 3.2      Revision: C

14081/015/01      © Peter Brett Associates LLP      Tel: 0160 487 8300      Fax: 0160 487 8333



0 50 100 150 200  
Metres

Reproduced from the Ordnance Survey Map with permission of the Controller of Her Majesty's Stationery Office. © Crown Copyright 2018. Carter Jonas LLP ES10004458

**Legend**

- Application Site Boundary
- Headwall structure - All headwalls to be brick built or to have brick cladding (headwall size indicative at this scale)

**Rookery South Legend**

- Drainage catchment = 1,053,724m<sup>2</sup> Contributing to attenuation pond in rookery south
- Minor contour (shown in 0.1m intervals)
- Major contour (shown in 0.5m intervals)
- High voltage overhead electricity cable
- Surface water rising main
- Surface water gravity sewer
- 100 Year plus 30% climate change top water level

based on pba drawing 14081/021/01K dated 21/11/08

Created by:  
Carter Jonas LLP  
Two Snow Hill,  
Birmingham,  
B4 6GA  
www.carterjonas.co.uk  
millbrook@carterjonas.co.uk

**Carter Jonas**

Created for:  
Millbrook Power Limited  
Drax Power Station  
Drax, Selby  
North Yorkshire  
YO8 8PH  
www.millbrookpower.co.uk

**Millbrook Power**

Title:  
The Rookery Low Level Restoration Scheme  
- Baseline Works for Millbrook Power secured via DCO Requirement 20

Scale: 1:2000 @A0  
Date: 10 April 2018  
Dwg no: J0008128-409  
Revision: -

Drawn by:	Checked by:	Approved by:
AB	IM	MD